

# ed+c

environmental design + construction

## Sustainability at Home and at Work

EID award winners

FSC special section

#####AUTO\*\*5-DIGIT 30030  
#3001960115# JL 002 100 0001  
EDCL  
KATE BRYANT ASST ACCT EXECUTIVE P236  
SPABLING COMMUNICATIONS  
619 E COLLEGE AVE STE A  
DECATUR GA 30030-5323  
046263

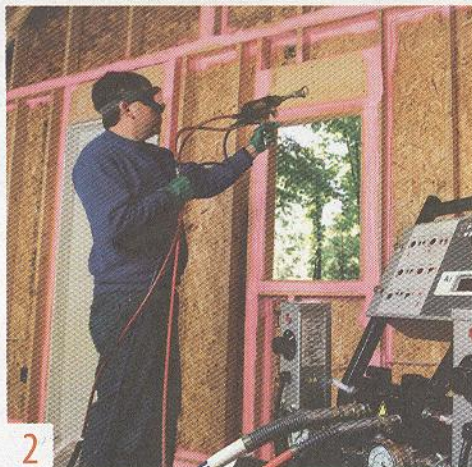


**CertainTeed**

Visit us at booth #921



1



2



3

# NEW + NOTABLE



4

To request more information on these products, visit [www.EDCmag.com/webcard](http://www.EDCmag.com/webcard) and enter the corresponding reader service numbers.

## 1 New Family of Energy-Efficient Products

YKK AP America's enerGfacade is a new family of energy-efficient products that includes several products, such as Luminance, ThermaShade and YOW350T. According to the company, these products are currently available on the market, and new products will be added soon. They have been grouped to better communicate their value as energy-efficient products. All YKK AP products are created in facilities that are environmentally friendly and ISO 14001 certified. Manufacturing in YKK AP's Dublin plant is vertically integrated, decreasing the amount of waste onsite by recycling all aluminum materials used within the plant. [www.ykkap.com](http://www.ykkap.com).  
YKK AP America | Reader Service No. 46

## 2 Insulation and Air Sealing System

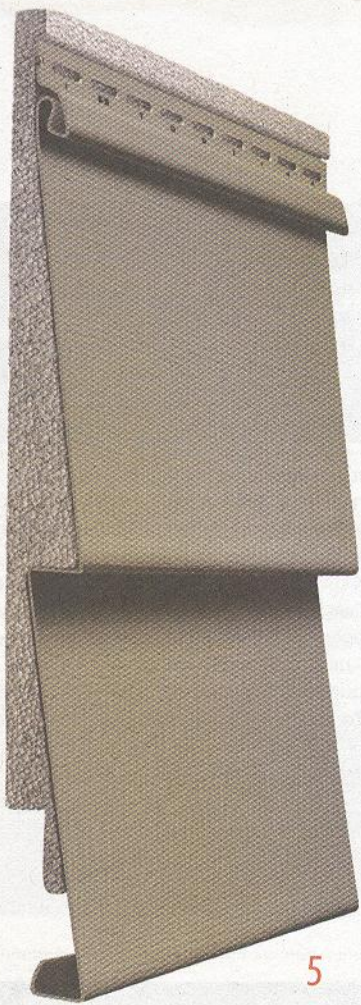
Owens Corning's EnergyComplete with Flexible Seal Technology is a whole home insulation and air sealing system. According to the company, this system combines energy savings, safety and affordability. Installed in two parts, the EnergyComplete system uses a new foam-based sealant to reduce air leakage, addressing a major source of energy loss, and proven PINK FIBERGLAS insulation to deliver exceptional thermal performance. Homeowners can save on heating and cooling costs, and the EnergyComplete system can also reduce the conditions that can lead to mold growth. [www.owenscorning.com](http://www.owenscorning.com).  
Owens Corning | Reader Service No. 47

## 3 Solutions Guard Against Abuse and Mold

Temple-Inland's ComfortGuard product line has added two new products: ComfortGuard Abuse-Resistant (AR) and ComfortGuard (IR) Impact-Resistant gypsum board. According to the company, ComfortGuard AR has an extra-durable face paper to withstand scuffs and abrasions in high-traffic areas. It is also manufactured with an enhanced core density that provides extra strength and heat resistance. ComfortGuard IR has the same performance properties, plus a special backing to keep impacts from penetrating the wall cavity. Both products are available in a 5/8-inch thickness, a 48-inch width and lengths of 8 feet to 12 feet. [www.templeinland.com](http://www.templeinland.com).  
Temple-Inland | Reader Service No. 48

## 4 Low-Energy Residential Air Conditioner

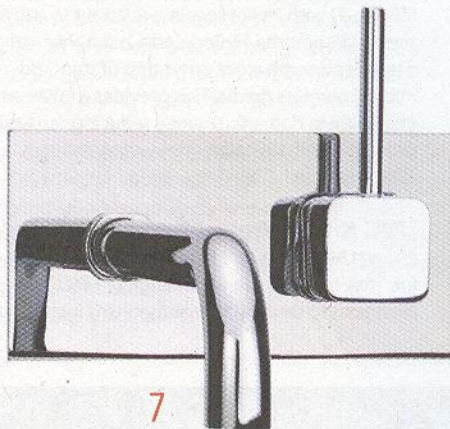
Coolerado Corporation announced a new central air conditioner sized for homes smaller than 1,500 square feet. The new system, called the M30, uses fewer than 450 watts of power. The Coolerado M30 is designed to be versatile and to be installed almost anywhere, including the roof, attic, on the side of the home, or in the garage, crawlspace or basement. The M30 is also designed so that two or more units can be combined together to create a much larger system for bigger homes or businesses that require more cooling but need a compact, low-profile unit. [www.coolerado.com](http://www.coolerado.com).  
Coolerado Corporation | Reader Service No. 49



5



6



7



8

### 5 Recycled Content in Vinyl Siding

CertainTeed CedarBoards Double 6-inch Clapboard Insulated Vinyl Siding now contains 60 percent recycled material, the company reports. Recycled materials, including scraps from job sites, vinyl siding distributors and other post-consumer sources, are integrated into the manufacturing process and verified by a third-party auditor on a quarterly basis. Backed by extruded polystyrene insulation, CedarBoards Insulated Vinyl Siding improves the energy efficiency of homes by insulating continuously over framing where energy loss is greatest. [www.certainteed.com](http://www.certainteed.com).

CertainTeed | Reader Service No. 50

### 7 Award-Winning Faucet Collection

Cifial USA's award-winning Quadra 25 Wall Mount faucet has a sleek, high-performance design that is ideal for smaller spaces such as apartments or condos, the company reports. A joystick lever ensures optimum control while the curved spout highlights the natural flow of water. Its high profile, 11.5 inches, is designed for living spaces with full bars or kitchen islands. It is EPA WaterSense certified and comes standard with a 1.5 gallon per minute (gpm) flow rate, resulting in a 30 percent savings as compared to the industry standard of 2.2 gpm. [www.cifialusa.com](http://www.cifialusa.com).

Cifial USA | Reader Service No. 52

### 6 Certified Wood for Many Uses

Offering both FSC- and SFI-certified products, Western Red Cedar is a sustainably harvested wood that is durable and insect-resistant, according to the WR-CLA. Common uses include cedar siding, decking, moulding, windows, doors, posts, beams, paneling, outdoor projects, interiors and saunas. Because cedar is virtually pitch and resin free, the wood accepts a range of finishes, from fine oils and stains to solid coatings and paint. Western Red Cedar's unique aroma comes from naturally occurring thujaplicins in its heartwood. These compounds resist moisture and are toxic to decay-causing fungi and insects and preserve the wood. [www.realcedar.com](http://www.realcedar.com).

Western Red Cedar Lumber Association | Reader Service No. 51

### 8 Institutional-Focused Carpet Tiles

Easy Street Collection, from Bentley Prince Street, has five styles that are offered in broadloom and carpet tile. According to the company, each has colors and patterning perfect for the education facility, medical office building or back office area. The collection's four solution-dyed patterns are manufactured with recycled content nylon with up to 10 percent post-consumer recycled content fiber and at least 17 percent pre-consumer recycled content fiber. When paired with PerformancePC backing, the collection's standard broadloom patterns contain up to 22 percent recycled content and standard carpet tile products contain up to 17 percent. [www.bentleyprincestreet.com](http://www.bentleyprincestreet.com).

Bentley Prince Street | Reader Service No. 53